



W.E.
Kingswell
INCORPORATED

Distributors of Heating, Ventilating and Air Conditioning Equipment
Product Information • August 16 - 31, 2024

CONDENSING UNITS

Why Thru-The-Wall?

- Easily Serviced in Any Weather
- Less Expensive Installations
- Ground Clutter Eliminated
- No Theft or Vandalism
- Less Refrigerant Charge
- No Roof Penetration
- Short Copper Tube Runs
- Separate Meter Savings
- Better Appearance

UP TO
13 SEER



NCPE SERIES
THRU-THE-WALL
COMFORT

for all types of Multi-Family Construction

**NATIONAL
COMFORT
PRODUCTS**

HEATING & A/C EQUIPMENT

AVAILABLE
at Kingswell

NCPE Series

NCPE 1000

NCPE 3000

NCPE 4000



**THRU-THE-WALL
COMFORT**

for all types of Multi-Family Construction

Thru-the-Wall Comfort

SPLIT SYSTEM CONDENSING UNITS AND HEAT PUMPS

- Save money and time with simple installation
- Eliminate long refrigerant lines and electrical runs
- Eliminate ground clutter, roof penetration/load, as well as theft or vandalism
- Simplify service and installation in any weather condition
- Separate electric and gas metering
- Improve overall appearance

**We are your source for
National Comfort
Thru-the-Wall units!**



Designed to Save Money and
Time with Simple Installation

**Thru-the-Wall units replace
the following brands with
little or no alterations:**

Series 1000

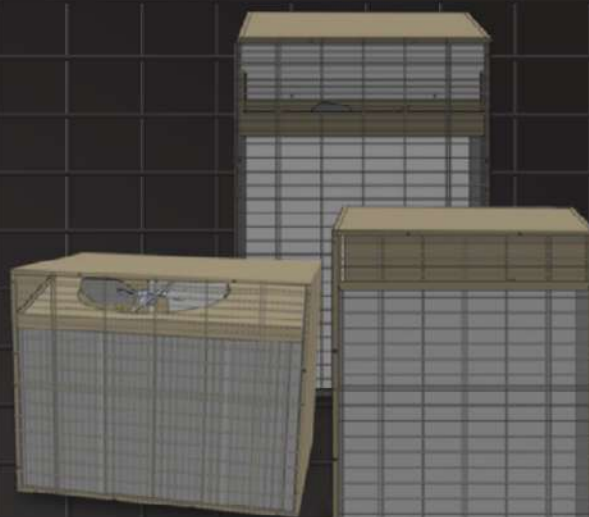
Bryant/Day & Night, Payne, Carrier, Dunham-Bush, Lennox, Meyers, U.S. A/C Products (BB), Magic Chef

Series 3000

Fedders, Rheem, Lennox, Magic Chef, Meyers, U.S. A/C Products (AB), Carrier

Series 4000

Westinghouse, Johnson AirEase, Dunham-Bush, Hydro-Therm, Space Pak, York, Luxaire, Lennox, U.S. A/C Products (CB)



Thru-the-Wall Comfort
for all types of **MULTI-FAMILY CONSTRUCTION**