



W.E.
Kingswell
INCORPORATED

Distributors of Heating, Ventilating and Air Conditioning Equipment
Product Information • January 1 - 15, 2026

AIREASE

Built for life. Yours.SM

A97MV

**HIGH-EFFICIENCY
VARIABLE SPEED
GAS FURNACES**

*A smart choice for
exceptional operation and
consistent comfort, even
in the coldest climates.*

AIREASE

5320 Sunnyside Ave. Beltsville, MD 20705 • www.wekingswell.com



A97MV

**HIGH-EFFICIENCY
VARIABLE SPEED
GAS FURNACES**

AIR EASE

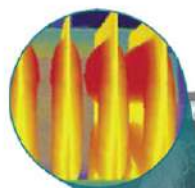
Built for life. Yours.™

AVAILABLE AT KINGSWELL!

Technology Designed with Your Comfort in Mind.

Inside every AirEase gas furnace, you'll find a high level of technology and craftsmanship, backed by a Lifetime Limited Warranty on the heat exchanger.*

To help you make the best system choice, here are a few things to consider:



Model shown A97MV

Advanced Heat Exchanger:

Made from stainless steel for maximum strength and crimped rather than welded, AirEase heat exchangers are highly resistant to thermal fatigue and other stresses caused by repeated heating and cooling. During the testing process, they are subjected to temperatures that far exceed normal operating ranges, to ensure they will stand up to decades of use.

EHX™ Technology:

Every AirEase furnace is engineered and built with EHX™ Technology, a patented design that eliminates the hot spots that can shorten furnace life. EHX Technology makes heat exchangers more durable, and with its advanced airflow system, more air contacts the heat exchanger surface area for greater heat transfer into the home, enhancing efficiency and comfort.

Modulating Gas Valve:

Highly precise system combines a modulating gas valve with variable-speed technology** to deliver consistent temperatures while saving energy. It constantly varies heat and airflow in increments as small as 5%, responding to outdoor conditions and household comfort needs. By comparison, a typical single-stage furnace operates at full heating capacity every time it cycles on.

Noise Reduction:

Insulated cabinet prevents loss of warm air, while reducing noise from the motor.

Quiet Combustion™ Technology:

Uses a lower Btu input per burner ensures quieter start-up and operation.

Comfort Sync® Control Panel:

All Pro Series™ units continuously monitor internal components for optimum performance and fault prevention. It can even work together with your Comfort Sync™ thermostat to notify you and your dealer if repairs or maintenance are needed.***

*Product registration required. Warranty applies to residential applications only. For terms, conditions and exclusions, see full warranty at airease.com.

**A962V and A97MV only

***A97MV only